

# HES<sup>®</sup> 8000 Electric Strike

ASSA ABLOY

The global leader in  
door opening solutions



## The concealed electric strike solution for cylindrical locksets.

### Saves Time

- No cutting into the face of the frame
- Field selectable 12 or 24 VDC/VAC
- Accommodates door sag with patented vertical adjustability

### Superior Aesthetics

- Completely concealed and requires no cutting on the face of the frame
- Available in today's most popular finishes
- Fits in standard ANSI prep

### Quality and Flexibility

- ANSI/BHMA A156.31, Grade 1
- UL 1034, burglary-resistant listed
- UL 294 listed



Grade 1



SecuriCare  
Warranty



Cylindrical  
Locksets



Field Selectable  
(Fail secure  
/Fail safe)



Dual Voltage  
12/24



PoE  
Friendly



Outdoor  
Rated



Burglary  
Rated

# No Cutting | Vertical Adjustment | Cylindrical Latchbolts

## Dimensions

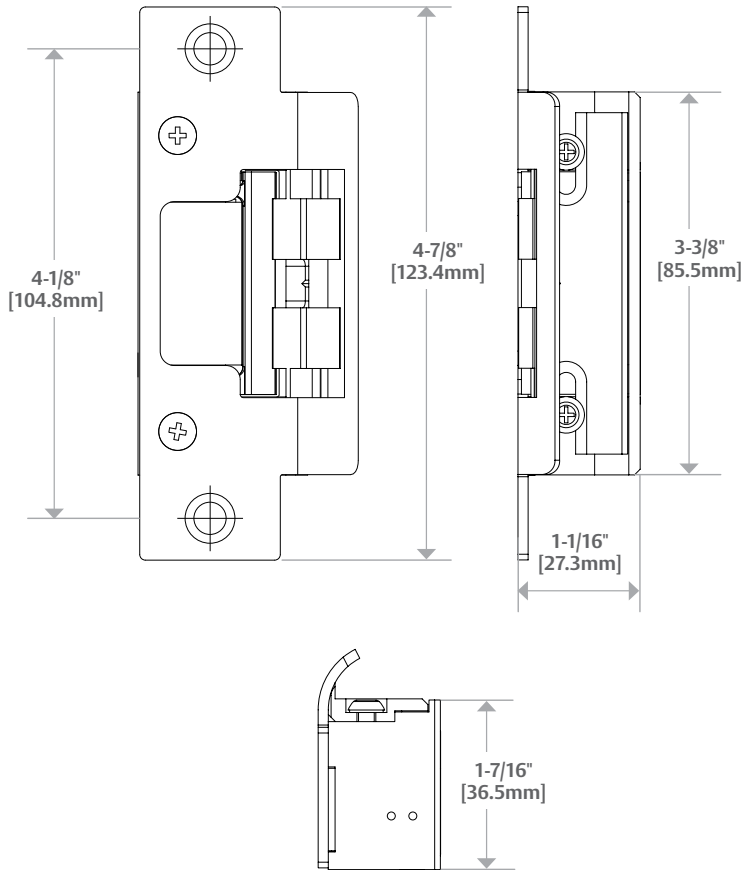


Diagram shown with 801 Option

## Specifications

### Certifications

- ANSI/BHMA A156.31, Grade 1
- UL 1034 burglary-resistant listed and suitable for outdoor use
- UL 294 listed
- RoHS compliant

### Frame Application

- Metal
- Wood

### Electrical (DC Continuous Duty)

- Dual voltage 12/24 VDC/VAC
- 240 mA at 12 VDC/120 mA at 24 VDC

## Features

### Standard Features

- No cutting on frame required
- Vertical adjustability to accommodate door sag and misalignment
- Tamper-resistant
- Static strength 1,500 lbs
- Dynamic strength 70 ft-lbs
- Endurance 1 million cycles
- Field selectable fail secure/fail safe
- Non-handed
- Internally mounted solenoid

- Accommodates 1/2" – 5/8" cylindrical latchbolt (5/8" with 1/8" [3.175mm] door gap)
- Strike body depth 1-1/16"
- Strike body width 1-7/16"
- SecuriCare five-year, no-fault, no questions asked warranty

### Optional Features

- **LBM** Latchbolt monitor

### Accessories

- **2001M** Plug-in bridge rectifier
- **2004M** ElectroLynx® adapter
- **2005M3** SMART Pac® III
- **2006M** Plug-in buzzer

## How to Order

Series	Model	Finish*	Option(s)
<b>8000</b>	—	<b>— 630</b>	<b>— LBM</b>
<b>8000</b> Universal Electric Strike; Faceplates ordered separately	<b>C*</b> Complete Electric Strike; Includes the 801 and 5801A faceplates	<b>605</b> Bright Brass <b>606</b> Satin Brass 612 Satin Bronze 613 Bronze Toned 629 Bright Stainless Steel 630 Satin Stainless Steel BLK Black	LBM Latchbolt Monitor