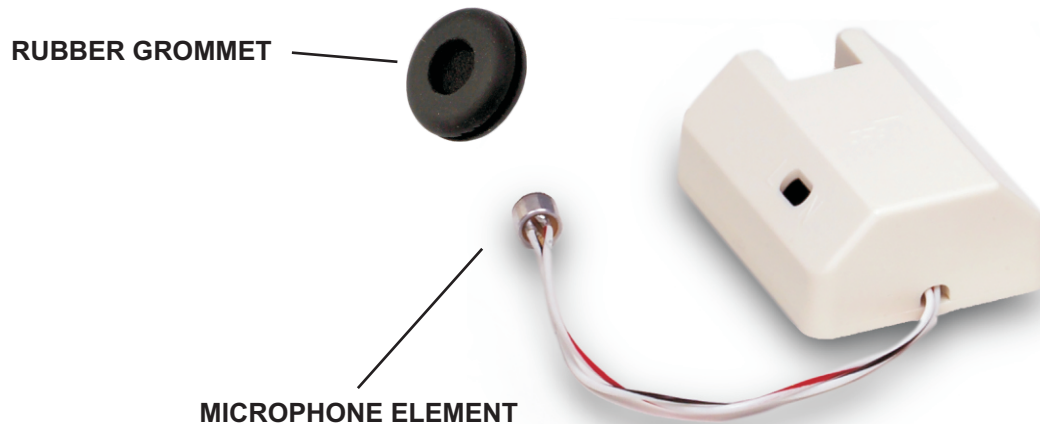


**MODEL C MICROPHONE**



The Verifact™ C is a low impedance, line level electret condenser microphone with pre-amp and omni-directional pickup. It is designed for mounting in special or customized housing. The Verifact™ C can pick up normal sounds 15 ft. away or within a 30 ft. Circle. It may be mounted up to 1,000 ft (305m) from the Louroe Base Station or audio interface adapter.

**WIRING REQUIREMENTS**

2 Conductor **shielded** cable, 22 gauge with a 24 gauge drain wire

**NOTE:** Unshielded cable is not satisfactory for audio systems

West Penn 452 or equivalent



# INSTALLATION AND OPERATING INSTRUCTIONS

## MECHANICAL INSTALLATION:

Microphone pre-amp is mounted in a protective plastic housing with openings for wire connection and microphone sensitivity adjustment. If microphone is to be mounted in a special housing, a black grommet is included for optional use in securing the microphone element to the inside of a camera housing or special housing. A 1/8" minimum opening must be provided for microphone pickup. Microphone should be located within 4' to 6' of the subject. **Avoid ceiling mounts in excess of 10' in height.**

## ELECTRICAL CONNECTION:

Verifact™ C Microphone will connect directly to any Louroe Base Station (AP Series, ALA Series or DG Series) or to the IF-1, IF-4 or IF-8 Interface Adapters. A small terminal block is located on the microphone pre-amp, and marked A, B, C:

A represents	12 Vdc (positive)
B represents	Audio (Mic output)
C represents	Ground (negative)

### NOTE:

Verifact C Microphone is NOT recommended for outdoor use or in areas with high moisture content.

## CONNECTING VERIFACT™ C MICROPHONE TO A LOUROE RECEIVING DEVICE (BASE STATION OR AUDIO INTERFACE ADAPTER)

After microphone connection has been made, run 2 conductor shielded cable to the Louroe Base Station or interface adapter.

If Louroe Base Station is AP Series, DG-12/25 series, IF-1, IF-4 or IF-8:

**RED** wire to terminal **A** of base station  
**BLACK** wire to terminal **B** of base station  
**BARE** wire to terminal **C** of base station

If Louroe Base Station is ALA 4/8 Series:

**RED** wire to terminal **B+** of base station  
**BLACK** wire to terminal **MIC** of base station  
**BARE** wire to terminal **GND** of base station

## CONNECTION VERIFACT™ C MICROPHONE DIRECTLY TO A DVR OR IP CAMERA

If a Louroe Audio Base Station or interface adapter is not used and Verifact™ C is to be connected directly to a DVR or soundcard, etc. use the following procedures:

- 1) Apply 12 Vdc (100 mA minimum) to PC board's terminals A and C, A is positive, C is ground
- 2) Run a single conductor shielded cable 22 gauge with a 24 gauge drain wire to DVR or IP Camera
- 3) Solder on an RCA connector with wire from terminal B of microphone going to the tip of the plug, and wire from terminal C of microphone going to the sleeve of RCA plug.
- 4) Connect RCA plug into "Audio In" jack of DVR or soundcard.

NOTE: If DVR's audio input is 3.5mm (1/8"port), a 3.5mm adapter must be connected to one end of the RCA cable. Check DVR manufacturer's instructions to determine if 3.5mm audio input is mono or stereo.

# INSTALLATION AND OPERATING INSTRUCTIONS

## MICROPHONE SENSITIVITY SWITCH

The microphone pre-amp (PC board) contains a sensitivity switch with two positions:

N represents normal sensitivity (zero dB @ 1,000)

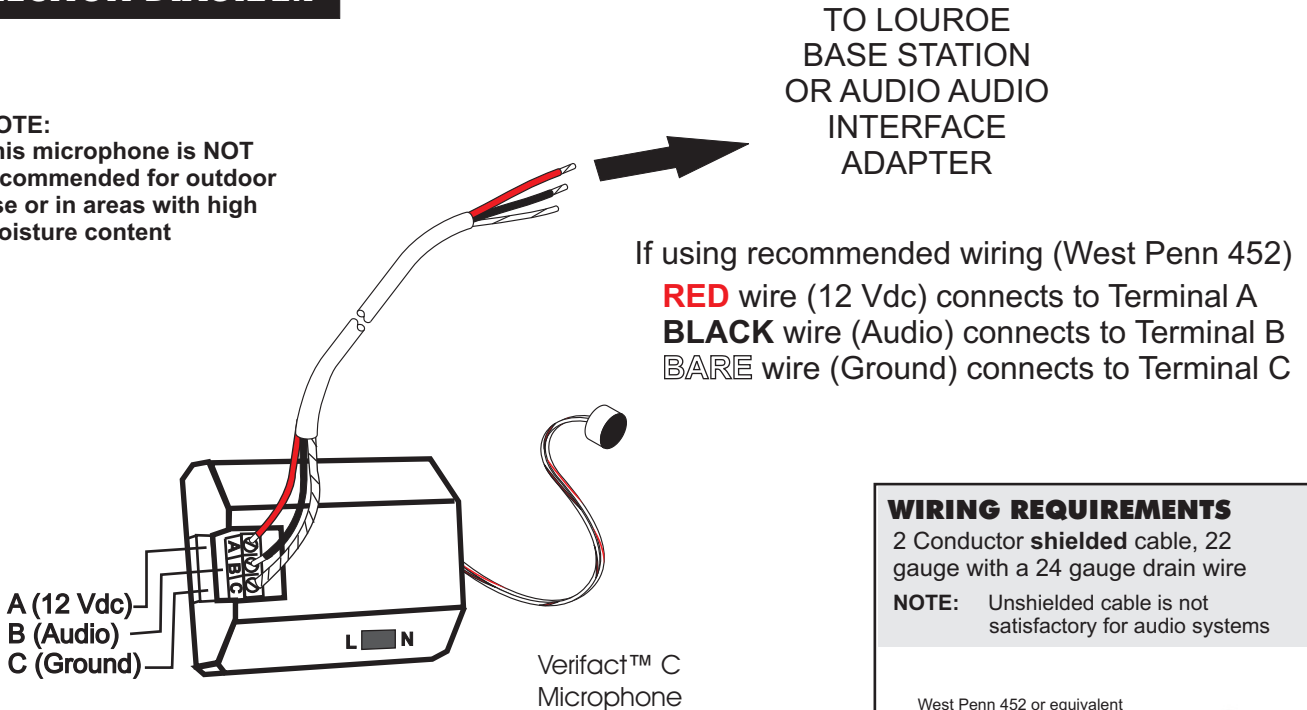
L represents lower sensitivity (-6 dB @ 1,000)

Microphone is always shipped in the N position. For less microphone sensitivity, move slide switch to L position. Do not change unless required.

## CONNECTION DIAGRAM

### NOTE:

This microphone is **NOT** recommended for outdoor use or in areas with high moisture content



## WIRING REQUIREMENTS

2 Conductor **shielded** cable, 22 gauge with a 24 gauge drain wire

**NOTE:** Unshielded cable is not satisfactory for audio systems

West Penn 452 or equivalent



## INSTALLATION TIPS

1. Use overall shielded audio cable only. West Penn 452, Belden 8451 or equivalent. **UNSHIELDED CABLE IS NOT SATISFACTORY FOR SOUND SYSTEMS.**
2. When used at a cash register checkout, microphone should be installed closer to the customer rather than the cash register, as the drawer sound could dominate the recording. It should be installed closest to the area to be monitored and documented.
3. Avoid installing microphone near air vents, air conditioners, fans and other equipment that generate high sound and air pressure.
4. If microphone is installed in a police interview room, room should be conditioned with any type of carpeting, acoustical ceiling tiles, acoustical foam, etc. to reduce echo. This will enhance the quality of live and recorded audio.
5. The APR-1 and microphone should have a barrier or solid wall between them in order to avoid audio feedback, especially when they are in close proximity to each other. If no barrier, microphone should be at least 25' from APR-1 to avoid acoustical feedback.

# MANUFACTURED IN THE



## IMPORTANT NOTICE

When this equipment is used as part of an audio monitoring system, the law requires that the public be given notice of AUDIO MONITORING ON THE PREMISES. A decal notice is included with each microphone shipped.



Federal Law References:  
Federal Regulations, US Code, Title 18.  
Crime and Criminal Procedure, Sec 2510.

## SPECIFICATIONS

■ Frequency response	40 Hz to 15 kHz $\pm$ 1 dB
■ Output	Line Level (0 dB @ 1000 $\Omega$ )
■ Current drain	4 mA
■ Supply voltage	12 Vdc
■ Output impedance (mic only)	600 $\Omega$ unbalanced
■ PC board housing dimensions	2 7/8"L x 2 3/8"W x 7/8"H
■ PC board dimensions	2 1/4"L x 1 5/8"W x 5/8" H
■ Microphone size	3/8"Dia. x 1/4"H
■ Weight	0.5 Lbs (0.2 Kg)

## WARRANTY

LOUROY ELECTRONICS® warrants that at the time of shipment products manufactured by LOUROY ELECTRONICS® to be free of defects in material and workmanship. Should a defect appear within one year (12 months) from date of shipment, LOUROY ELECTRONICS® will, at its sole discretion, repair or replace the defective equipment. This equipment shall not be accepted for repair or return without prior notification by LOUROY ELECTRONICS®.

This warranty does not extend to any Louroe product that has been subjected to improper or incorrect installation, misuse, accident, or in violation of installation instructions provided by LOUROY ELECTRONICS®.

Returned shipments to LOUROY ELECTRONICS® shall be at customer's expense. LOUROY ELECTRONICS® will return the equipment prepaid via best way.