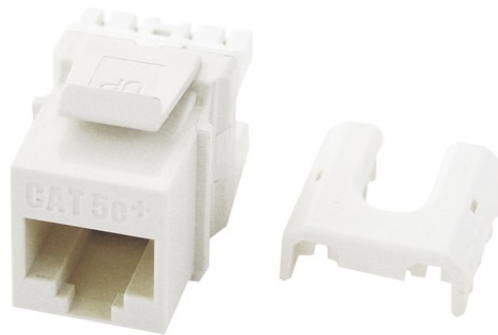


# Cat 5e Quick Connect RJ45 Keystone Insert, White

WP3475-WH



## features & benefits

- Easily terminate all four pairs using the Legrand Punch & Go Tool ([AC3400](#))
- RJ45 Inserts can be terminated with any 110 punchdown tool
- Exceeds EIA/TIA 568A/B Cat 5e Performance Specifications
- Available in Black, Brown, White, Light Almond, Grey, Blue, Orange, Ivory, Red
- Contractor packs available in quantities of 50. To order, use part number WP3475-WH-50

## specifications

### General Info

Color: White  
Termination: 8P8C  
Connection Type: RJ45 Female  
Type: Keystone Insert

### Assembly/Installation Information

Installation Tips: Terminate with Punch & Go Tool (AC3400)

### Listing Agencies/Third Party Information

CSA Listing Info: CAN/CSA-C22.2 No. 182.4-1990  
CSA Standard: Yes  
UL Listing No: ANSI/UL 1863  
UL Standard: Yes

UN SPS C: 39121704

### **Dimensions**

Depth Metric: 30 mm  
Depth U S: 1.18"  
Height Metric: 22 mm  
Height U S: .87"  
Width Metric: 16.9 mm  
Width U S: .665 in

### **Technical Information**

Cat5 Cable Rating: Cat5e  
Flammability Rating: UL 94V-0  
Humidity: 93% Maximum Noncondensing  
Material: High Impact Flame Retardant Plastic  
Operating Temperature Celsius: -10°C to 60°C  
Operating Temperature Fahrenheit: 14°F to 140°F  
Performance Rating: Meets TIA/EIA-568-B.2-1 Cat.6 Short Link requirements  
Product Fits Into: Keystone Cutout  
Storage Temperature: -40°C to 70°C