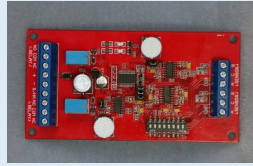


Featured Products for 2017

Processor



HA2 Multi-Purpose Processor: a two-zone processor that replaces the U111, U313, and P500 processors. This processor operates all indoor and outdoor Pulsor applications as well as P500 probe installations.

HA2BC Multi-Purpose Processor: a two-zone processor that replaces the 111, 313, and 212 processors.

Wireless



Wireless Receiver and Transmitter: The RX6 wireless receiver is a plug-in chime unit with over fifty melody selections and various volume levels. Multiple receivers can be programmed to a single transmitter. Ideal for use as a doorbell and other short-range entry request systems. The TX612 is a wireless 12VDC transmitter. System range: Approx. 500 feet.

Motion Detector



The DPLR3 or 7 "Hideaway" is a high sensitivity radar sensor for the detection of movement. The unit can be hidden in a closet or drawer and can even be placed between floors for multi-level protection. The unit operates on 12VDC and has a normally-closed circuit. It is easy to install and ideal for vacant building security. Ranges: 3 or 7 meters.



Contents

- Featured Products
- Pulsors
- Probes
- Processors
- Accessories
 - * Window Security
 - * General
 - * Marine
- Boat Alarms
- Reporting / Tracking



ENHP

PULSORS

The *Invisible* Motion Sensor
The Only Smart Choice



DSE

The Pulsor is a one-of-a-kind stress sensor that is completely invisible because it is epoxied to the bottom edge of a support joist where it cannot be seen. It is effective on both steel and wooden structures. Consider each Pulsor as a landmine protecting an area of the floor through which a person is most likely to pass. The average area of detection is an oval seven feet (7') along the joist and four feet (4') across.

Which Pulsor to Install?

Sure Action has multiple stress sensors that enable installers to use Pulsors with virtually any type of residential, commercial and marine construction.

Pulsor	Purpose
ENHP	Most frequently used Pulsor. Use for standard building materials and boat gunwales.
HPP	Use for stiffer building materials (ex., steel I-beams, concrete floors)
DSE	Use with high-flex materials (ex., fiberglass boat decking, joists 2x6 and under)
XHP	Use with extremely stiff construction (ex., concrete and steel construction)



XHP

Environmentally-sealed and utilizing 22-gauge marine-grade wire leads, the Pulsors are ideal for both indoor and outdoor applications. They will not respond to vibration, shock, snow loads, building settling, airborne items, or other adverse conditions (including pets up to 60 pounds). They sense only the unique flexing of the floor caused by a person's movement. Sensitivity is fully adjustable from the processor.



HPP

Part Number	Product Description
ENHP	Package—1 Enhanced Pulsor
ENHP6	Package—6 Enhanced Pulsors
ENHP12	Package—12 Enhanced Pulsors
HPP	Package—1 High Performance Pulsor
HPP6	Package—6 High Performance Pulsors
HPP12	Package—12 High Performance Pulsors
DSE2	Package—2 DSE (Deck Sensor) Pulsors
DSE6	Package—6 DSE (Deck Sensor) Pulsors
DSE12	Package—12 DSE (Deck Sensor) Pulsors
XHP	Package—1 Extreme Performance Pulsor

- * Use an even number of sensors for outdoor, roof, marine, and other applications where the sensors are subject to wide temperature changes.
- * Different sensors can be mixed on a single zone of the processor.
- * All sensors are identical in size and are identified by the color of their wire leads.



Sure Action 2017 Product Catalog
Phone: (800) 648-4301, (631) 728-3986
Web Site: www.sureaction.com

PROBES

Solutions for all your vehicle detection scenarios

Sure Action probes are devices that monitor the earth's magnetic field within a 3-dimensional space. They are passive devices and emit no energy. **Probe systems will not latch in the presence of metal**, they are momentary devices and, therefore, cannot be used as safety devices.



P8000C

The ***P8000 Directional*** Probe System:

- * Discriminatory to inbound / outbound traffic
- * Requires 22/4 shielded direct burial wire with drain
- * Splice friendly up to 1 mile
- * Commonly used when different actions are desired for inbound vs. outbound vehicles, **or** when an action is to be taken for vehicle traveling only in one direction



P8000 Directional Probe



P5W1

The ***P5W1 Basic*** Probe System (indoor only):

- * Non-discriminatory to inbound / outbound traffic
- * Requires a ***P500 series basic probe***
- * White ABS enclosure (not weather-resistant)
- * Commonly used for annunciation when wire and probe installation coincide and the box is to be mounted indoors
- * Sounder and probe sold separately



P500 Series Basic Probe

The ***P500B Basic*** Probe System:

- * Non-discriminatory to inbound / outbound traffic
- * Requires a ***P500 series basic probe***
- * Black NEMA III enclosure (weather-resistant)
- * Commonly used for gate operation **or** annunciation when wire and probe installation coincide and the box is mounted outdoors
- * Sounder and probe sold separately



WP5C

The ***WP5 Low Power*** Probe system:

- * Non-discriminatory to inbound / outbound traffic
- * 9-Volt battery operated
- * Outdoor components are conformal coated to withstand moisture
- * Commonly used when trenching wire is impractical or undesirable
- * ***WP5B***—Pkg. w/ no wireless
- * ***WP5C***—Pkg. Single Entrance, wireless included (2000 ft.), ***WP5CLR***—(5,000 ft.)
- * ***WP5CDE***—Pkg. Dual Entrance, wireless included (2000 ft.), ***WP5CDELR***—(5,000 ft.)

*Probes purchased separately for Basic probe systems. Part #: P500-xx where xx = 50, 125, 250, 500 or 1000

*All probes are designed for direct burial beside a 14-foot wide driveway.

*All components of package systems may be purchased individually.



Sure Action 2017 Product Catalog
Phone: (800) 648-4301, (631) 728-3986
Web Site: www.sureaction.com

Processors



HA2 Processor

HA2	2-Zone Processor that replaces the U111, U313, and P500 processors. It can operate up to 2 P500 probes or up to 8 Pulsors, and it can be used for indoor and outdoor Pulsor applications. Pulsors and probes cannot be mixed on the same processor.
HA2BC	2-Zone processor that replaces the 111, 313, and 212 processors. This processor specifically works with the P8000 probes and serves as a replacement processor for the P5050 probes. Like its counterpart, the HA2 processor, the HA2BC processor can also indicate directional responses.
WP5	Low Power (9-Volt Battery) Basic Probe Processor.

Accessories



CHIMEPLT



N3BOX



SPLKT

Window / Door Security (strong aluminum alloy construction)	
BB2	Bandit Bar for Windows - Fits Any window from 26" to 36"
BBEXT	Bandit Bar Extension (24-inches)
BBD	Buster Bar for doors
Wire xx = Spool length of 250, 500, or 1,000 ft.	
2SW-xx	22/2 Shielded Direct Burial Cable with Drain
General	
CHIME	Electronic Chime
CHIMEPLT	Electronic Chime mounted with on/off switch
RX6	Plug-in Chime Unit with over 50 melody selections & various volume levels. Multiple receivers can be programmed to 1 transmitter
TX612	Wireless 12VDC Transmitter
NS4	Package -- (4) Pulsor Epoxy with mixing sticks
N3BOX	NEMA III Enclosure (Black). Inside dim. 4.5" x7.5"x2.75" Outermost dim. including hinges & flange 6"x8.5"x3.5"
N4BX1	NEMA 4 Lg. Enclosure (Gray). Outermost dim. 6.77"x10.8"x4.33"
N4BX2	NEMA 4 Sm. Enclosure (Gray). Outermost dim. 3.39"x7.87"x2.75"
ON/OFF	Day/Night Photocell (circuit board & remote sensor)
SPLKT	Direct burial splice kit
Marine	
MGSC	Small Door / Hatch Contact with 20-foot lead
MGLC	Large Door / Hatch Contact with 20-foot lead
MGPTP	Point-to-Point Contact with 20-foot lead
MGBS	Bilge Sensor
MGMT	Water-Resistant Keychain Transmitter for MG systems
MGRC	Dual-Tech Radar Sensor
MGWC	Wireless Door / Hatch contact for MG systems
MGSIREN	MarineGuard Siren
PSIREN	White low profile flush mount siren for MG systems

Marine Security

The **MG0 Series Boat Alarm** is a basic, compact security system designed specifically for the protection of smaller boats. The controls are also ideal for specialty craft of various types, such as cars, RVs, and aircraft. The main control is housed in a NEMA III enclosure. The system has one circuit for deck sensors and another circuit for auxiliary devices (contacts, etc.).

Each system is hand-assembled in the USA. All systems are encapsulated for protection from the harsh marine environment. The systems can accept all normally-open security devices. These devices will immediately trigger an armed system. Alarm condition will last for two minutes. During this time, the siren will sound, and 12-volt lights will activate. After two minutes, the system will reset and wait for another violation. Arming and disarming is accomplished using wireless key chain transmitters.



Part #	Product Description
MG01C	MarineGuard 01 Complete Boat Alarm - CG1 Control in NEMA 3 Box, Small Flush Mount White Siren, 2 Deck Sensors (DSE2) , LED, 2 Wireless Key FOB, Wireless Receiver
MG02C	MarineGuard 02 Complete Boat Alarm - CG1 Control in NEMA 3 Box, Small Flush Mount White Siren, 2 Wireless Contacts , LED, 2 Wireless Key FOB, Wireless Receiver

Monitoring Solutions	
MGR	MarineGuard Radio (Non GPS) with whip antenna
MGR-GPS	MarineGuard Radio (GPS) w/ disc antenna & enclosure
MGR-SAT	Skywave Inmarsat GPS (low elevation)
Reporting / Tracking Plans (Annual)	
Cellular (Non GPS)	
MGM-BC1	Basic Cell 1 - Monitors security and/or bilge. Reports system status every 5 days. Alarm signals sent to cell phone, pager or computer email address.
MGM-BC2	Basic Cell 2 - Basic Cell plus reports system arming and disarming.
Cellular (GPS)	
MGM-GC1	GPS Cell 1 - Monitors security and/or bilge. Reports system status every 5 days. Signals sent to cell phone, pager or email address. Ping (request location) ability.
MGM-GC2	GPS Cell 2 - GPS Cell 1 plus reports system arming and disarming.
Satellite	
MGM-S1	(Basic Satellite) - Monitors security and/or bilge. Reports system status every 5 days. Signals sent to cell phone, pager or email address. GeoFence and Ping (request location) ability.
MGM-S6	MGM-S1 except system reports GPS information every 6 hours while moving. (4 times per day)
MGM-S12	MGM-S1 except system reports GPS information every 12 hours while moving. (2 times per day)
MGM-S24	MGM-S1 except system reports GPS information once per day while moving. (1 time per day)
Central Station (Call Center) Monitoring (Optional)	
MGM-CS	Central Station (call center) monitoring



Sure Action 2017 Product Catalog
 Phone: (800) 648-4301, (631) 728-3986
 Web Site: www.sureaction.com