



**WINLAND**  
ELECTRONICS, INC.

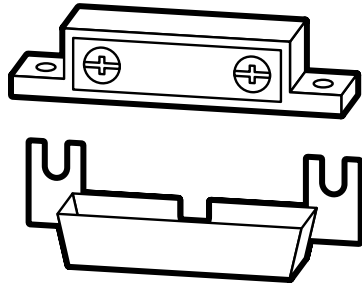
# TEMP°ALERT®

Fixed Set Point Temperature Alert (40° F)

## CONTENTS

This package contains:

- 1 TA-40
- 1 Installation/Operating Instructions Guide



TA-40

## SPECIFICATIONS

Power Requirement	No power required to operate.
Fixed Setting	N.O. $\leq 39.2^{\circ}$ F ( $4^{\circ}$ C)
Temp Accuracy	$\pm 5.4^{\circ}$ F ( $\pm 3^{\circ}$ C)
Temp Sensing Element	Bimetallic
Outputs	N.C. dry contact ( <b>Not for high voltage use.</b> )
Contact Output Rating	200mA @ 24VDC/VAC
Operating Temperature	-40 to 212° F (-40 to 100° C); non-condensing environment. Indoor use only.
Weight	3 oz (85 g)
Dimensions	2.5 x .8 x 0.55" (6.4 x 2 x 1.4 cm)
Material	ABS
Mounting	2 screw holes (0.165" [0.42 cm] diameter)

Tech Support 8:00am - 5:00pm Central Time  
(800) 635-4269 • +1-507-625-7231 P  
[www.winland.com](http://www.winland.com)



## ***INTRODUCTION***

Thank you for your purchase of the Winland Temp° Alert® model TA-40. Your new Temp° Alert® has been designed for reliable monitoring of areas where low temperature limits are critical. Temp° Alert® monitors and activates when the temperature drops below 39.2° F (4° C).

## ***LOCATION***

It is difficult to precisely specify the location or quantity of TA-40s to install. A number of factors such as room size, effectiveness of the ventilation system, and the likelihood of freezing should be considered. If the building already has an energy management system, an easy rule of thumb is to install a TA-40 near each thermostat. When protecting a building against freeze damage, always install at least one Temp° Alert® on every level of the home or business.

## ***INSTALLATION***

### **Items needed:**

- Either Standard or Phillips screwdriver
- Quantity of two (2) #6 Screws
- 22-18 AWG twisted pair

### **Step 1**

Use the base of the TA-40 as a template and mark the position of the screw holes. Drill pilot holes if necessary. Align the TA-40 with mounting holes and install the screws. Do not fully tighten screws at this time.

### **Step 2**

Connect the TA-40 to your warning device by attaching an 22-18 AWG twisted pair cable to the terminals. Slide the cover on and finish tightening the mounting screws.

## **Operation and Testing Procedures**

The TA-40 must be located in an area where the temperature range is within -40° to 212° F (-40° to 100° C). Contacts will remain closed at temperatures above 39.2° F (4° C). But if the temperature drops below 39.2° F (4° C) the contacts will open to activate any hardwire alarm or wireless transmitter. The tolerance on this temperature switch is  $\pm 5.4^{\circ}$  F.

To manually activate the TA-40 for testing purposes, place the device in a freezer for 10 minutes. Remove the TA-40 from the freezer; test the contacts with an ohmmeter to confirm they have opened.

**To insure proper operation, test weekly.**

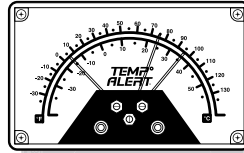
## ADDITIONAL TEMP°ALERT® PRODUCTS

# TEMP°ALERT®

### TA-1

#### Single output temperature monitoring

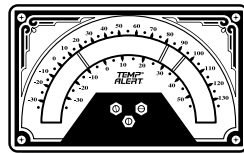
No power required to operate.  
50 to 130°F alarm range; non condensing environments only.  
N.O. dry contacts.  
Not for use in coolers and freezers.



### TA-2HL

#### Dual output temperature monitoring

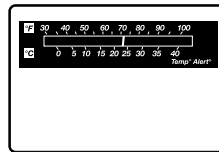
No power required to operate.  
50 to 130°F alarm range; non condensing environments only.  
N.O. dry contacts.  
Not for use in coolers and freezers.



### MTA-1

#### Dual output temperature monitoring

No power required to operate.  
50 to 100°F alarm range; non condensing environments only.  
N.O. dry contacts.  
Not for use in coolers and freezers.



### **IMPORTANT:**

Do not place any Temp°Alert® in a cooler or freezer. Frost buildup and moisture can cause the unit to malfunction. For cooler & freezer applications, use an EnviroAlert® device with a remote probe.

## WEEE Product Recovery/Recycling for EU Customers

In an effort to improve waste management in the European Union, the European Union has enacted directive 2002/96/EC on Waste Electrical and Electronic Equipment (WEEE Directive). According to the WEEE Directive, Winland Electronics must take back waste electrical or electronic equipment covered under the WEEE Directive, at its cost, for all product it puts on the market after July 1, 2006. The Return Process: Contact Winland via our web site at [www.winland.com](http://www.winland.com).

## Applicable Directives

RoHS Directive 2002/95/EC; WEEE Directive 2002/96/EC

## Statement of Compliance:

Winland Electronics, Inc. hereby declares this device is in compliance with all the applicable Directives 2002/95/EC, 2002/96/EC. This device is considered a passive EM device and is thereby excluded from the scope of the EMC directive 89/336/EEC and Low Voltage Directive 73/23/EEC.

## Symbols on the Product or Manual Labeling



For product disposal, ensure the following:

- Do not dispose of this product as unsorted municipal waste.
- Collect this product separately.
- Use collection and return systems available to you.



WEEE Waste Electrical and Electronic Equipment  
RoHS Restriction of Hazardous Substances

## ONE YEAR LIMITED WARRANTY

Winland Electronics, Inc. ("Winland") warrants to the end user/purchaser that each product of its manufacture shall be free from defects in material and factory workmanship for a period of one year from the date of purchase, when properly installed and operated under normal conditions according to Winland's instruction.

Winland's obligation under this warranty is limited to correcting, without charge, at its factory any part or parts thereof which shall be returned to the factory, by the original purchaser, transportation charges prepaid, within one year of the date of purchase and which upon examination, shall disclose to Winland's satisfaction to have been originally defective. Correction of such defects by repair to, or supplying replacements for, defective parts shall constitute fulfillment of all Winland's obligations to purchaser under this limited warranty. Repair service performed by Winland after one year from date of purchase will be for a reasonable service charge.

This limited warranty shall not apply to any of Winland's products which have been subject to misuse, negligence or accident or which have been repaired or altered outside of Winland's factory. The warranty is void if the Product's housing or cover is removed.

Winland shall not be liable for loss, damage or expense resulting, directly or indirectly, from the use of its products or any other cause.

This warranty shall be null and void in its entirety if: (i) the product is altered or modified in any way that is not consistent with the manufacturer's instructions, or (ii) the product is used with or connected to a device: (a) that such product is not intended to be used with or connected to, (b) is not otherwise consistent with the manufacturer's instructions, or (c) is not otherwise approved by the manufacturer.

THIS WARRANTY IS IN LIEU OF ALL OTHER WARRANTIES, EXPRESS OR IMPLIED, INCLUDING, WITHOUT LIMITATION, ANY WARRANTIES OF MERCHANTABILITY, FITNESS FOR PARTICULAR PURPOSES, NON-INFRINGEMENT AND TITLE, AND ANY WARRANTIES ARISING FROM COURSE OF DEALING, USAGE OF TRADE OR OTHERWISE. ALL OTHER REPRESENTATIONS MADE TO THE END USER/PURCHASER BY ANY OTHER PARTY ARE ALSO EXCLUDED. WINLAND SHALL NOT BE LIABLE TO ANY PERSON FOR INDIRECT, SPECIAL, INCIDENTAL OR CONSEQUENTIAL DAMAGES OF ANY DESCRIPTION, WHETHER ARISING OUT OF WARRANTY OR OTHER CONTRACT, NEGLIGENCE OR OTHER TORT, OR OTHERWISE. Under no circumstances shall Winland's liability under this limited warranty exceed the purchase price paid by the end user/purchaser for the product.

No person, agent or dealer is authorized to give warranties on behalf of Winland nor to assume for Winland any other liability in connection with any of its products.