



PREMIER
CONDUIT



3200 West 22nd Street
Erie, PA 16506
ph 814.835.2900
fax 814.835.2904
www.premierconduit.com

Premier-Plenum Duct

Premier Plenum Duct is a flexible, non-metallic, corrugated raceway used for effective interior cable and fiber optic management. Premier Plenum meets UL-(910) standards for the National Electrical Code, Article 770, and satisfies UL-2024 standards for low smoke and flame propagation.

Premier Plenum is offered in 3/4", 1", 1 1/4", 1 1/2" and 2", with pre-installed pull tape for easy cable installation. The standard color is orange and is offered in a variety of other colors. Sequential marked footage is standard. Custom options, such as multiple colors per reel and Slit Duct, are also available.

Future growth or maintenance of your interior cable system is made easy with Premier Plenum.



Plenum Reels

Size	Color	Part No.	Nominal I.D.	Nominal O.D.	Pull Tape	Reel Size	Reel Length (ft.)
3/4"	Orange	P-075T- 2200	0.932"	1.00"	1130 lb	36-38-36	2200
3/4"	Orange	P-075T- 6300	0.932"	1.00"	1130 lb	48-45-48	6300
3/4"	Orange	P-075T- 9600	0.932"	1.00"	1130 lb	66-45-66	9600
3/4"	Orange	P-075T-11500	0.932"	1.00"	1130 lb	72-45-72	11500
3/4"	Orange	P-075T-15500	0.932"	1.00"	1130 lb	82-45-82	15500
1"	Orange	P-100T- 500	1.049"	1.35"	1130 lb	36-36-21	500
1"	Orange	P-100T-1000	1.049"	1.35"	1130 lb	36-36-21	1000
1"	Orange	P-100T-2500	1.049"	1.35"	1130 lb	48-41-24	2500
1"	Orange	P-100T-5000	1.049"	1.35"	1130 lb	66-41-24	5000
1"	Orange	P-100T-6000	1.049"	1.35"	1130 lb	72-41-24	6000
1"	Orange	P-100T-9000	1.049"	1.35"	1130 lb	82-41-24	9000
1 1/4"	Orange	P-125T- 700	1.25"	1.56"	1130 lb	36-36-21	700
1 1/4"	Orange	P-125T-1350	1.25"	1.56"	1130 lb	48-41-24	1800
1 1/4"	Orange	P-125T-3400	1.25"	1.56"	1130 lb	66-41-24	3400
1 1/4"	Orange	P-125T-4000	1.25"	1.56"	1130 lb	72-41-24	4000
1 1/4"	Orange	P-125T-6000	1.25"	1.56"	1130 lb	82-41-24	6000
1 1/2"	Orange	P-150T- 500	1.57"	1.80"	1130 lb	36-36-21	500
1 1/2"	Orange	P-150T-1000	1.57"	1.80"	1130 lb	48-41-24	1200
1 1/2"	Orange	P-150T-2500	1.57"	1.80"	1130 lb	66-41-24	2500
1 1/2"	Orange	P-150T-3500	1.57"	1.80"	1130 lb	72-41-24	3500
1 1/2"	Orange	P-150T-4500	1.57"	1.80"	1130 lb	82-41-24	4500
2"	Orange	P-200T- 300	2.0"	2.349"	1130 lb	36-41-24	300
2"	Orange	P-200T- 700	2.0"	2.349"	1130 lb	48-41-24	700
2"	Orange	P-200T-1600	2.0"	2.349"	1130 lb	66-41-24	1600
2"	Orange	P-200T-2000	2.0"	2.349"	1130 lb	72-41-24	2000
2"	Orange	P-200T-2500	2.0"	2.349"	1130 lb	82-41-24	2500



Plenum Coils

Size	Color	Part No.	Nominal I.D.	Nominal O.D.	Pull Tape	Coil Length (ft.)
3/4"	Orange	P-075T-1050	0.932"	1.00"	1130 lb	Up to 1050
1"	Orange	P-100T- 500	1.049"	1.35"	1130 lb	Up to 500
1 1/4"	Orange	P-125T- 500	1.25"	1.56"	1130 lb	Up to 500
1 1/2"	Orange	P-150T- 350	1.57"	1.80"	1130 lb	Up to 350
2"	Orange	P-200T- 250	2.0"	2.349"	1130 lb	Up to 250

Test Results (Using Test Method UL-2024)

Properties	Value
Smoke peak optical	0.02
Smoke average optical density	0.01
Max. flame spread distance (ft.)	1.5'
Max. flame temperature	554°F

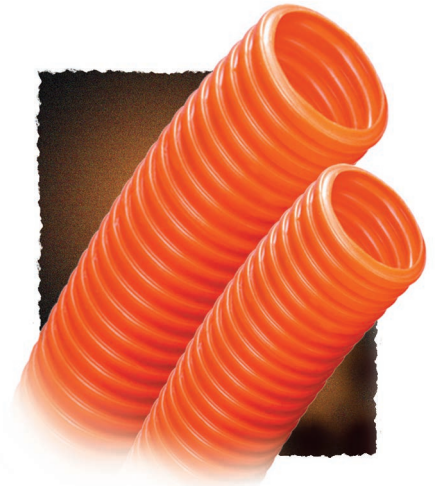
Sample Part Number

P	100	T	S	2500
Plenum	1" (I.D.)	Polyester Tape	*Slit Duct (optional)	Put-Up

* Pull tape not available w/ Slit Duct

Corrugated HDPE

Premier Corrugated HDPE is manufactured from High Density Polyethylene (HDPE) and is intended to be placed inside of existing innerduct. It's ideal for pulls under 1000 ft. and is designed to reduce surface contact when pulling cable. This lightweight product offers maximum flexibility, and allows for installation in small or restricted areas. Corrugated duct is available in 3/4", 1", 1 1/4", 1 1/2" and 2". The standard color is orange and is offered in a variety of other colors. Sequential marked footage is standard. Custom options, such as multiple colors per reel and Slit Duct, are also available.



Corrugated HDPE Reels

Size	Color	Part No.	Nominal I.D.	Nominal O.D.	Pull Tape	Reel Size	Reel Length (ft.)
3/4"	Orange	PEC-075T- 2200	0.932"	1.00"	1130 lb	36-38-36	2200
3/4"	Orange	PEC-075T- 6300	0.932"	1.00"	1130 lb	48-45-48	6300
3/4"	Orange	PEC-075T- 9600	0.932"	1.00"	1130 lb	66-45-66	9600
3/4"	Orange	PEC-075T-11500	0.932"	1.00"	1130 lb	72-45-72	11500
3/4"	Orange	PEC-075T-15500	0.932"	1.00"	1130 lb	82-45-82	15500
1"	Orange	PEC-100T- 500	1.049"	1.35"	1130 lb	36-36-21	500
1"	Orange	PEC-100T-1200	1.049"	1.35"	1130 lb	36-36-21	1200
1"	Orange	PEC-100T-2800	1.049"	1.35"	1130 lb	48-41-24	2800
1"	Orange	PEC-100T-5000	1.049"	1.35"	1130 lb	66-41-24	5000
1"	Orange	PEC-100T-6000	1.049"	1.35"	1130 lb	72-41-24	6000
1"	Orange	PEC-100T-9000	1.049"	1.35"	1130 lb	82-41-24	9000
1 1/4"	Orange	PEC-125T- 700	1.25"	1.56"	1130 lb	36-36-21	700
1 1/4"	Orange	PEC-125T-1500	1.25"	1.56"	1130 lb	48-41-24	1800
1 1/4"	Orange	PEC-125T-3400	1.25"	1.56"	1130 lb	66-41-24	3400
1 1/4"	Orange	PEC-125T-4000	1.25"	1.56"	1130 lb	72-41-24	4000
1 1/4"	Orange	PEC-125T-6200	1.25"	1.56"	1130 lb	82-41-24	6200
1 1/2"	Orange	PEC-150T- 550	1.57"	1.80"	1130 lb	36-36-21	550
1 1/2"	Orange	PEC-150T-1000	1.57"	1.80"	1130 lb	48-41-24	1200
1 1/2"	Orange	PEC-150T-2500	1.57"	1.80"	1130 lb	66-41-24	2500
1 1/2"	Orange	PEC-150T-3500	1.57"	1.80"	1130 lb	72-41-24	3500
1 1/2"	Orange	PEC-150T-4500	1.57"	1.80"	1130 lb	82-41-24	4500
2"	Orange	PEC-200T- 300	2.0"	2.349"	1130 lb	36-41-24	300
2"	Orange	PEC-200T- 700	2.0"	2.349"	1130 lb	48-41-24	700
2"	Orange	PEC-200T-1600	2.0"	2.349"	1130 lb	66-41-24	1600
2"	Orange	PEC-200T-2000	2.0"	2.349"	1130 lb	72-41-24	2000
2"	Orange	PEC-200T-2800	2.0"	2.349"	1130 lb	82-41-24	2800

Corrugated HDPE Coils

Size	Color	Part No.	Nominal I.D.	Nominal O.D.	Pull Tape	Coil Length (ft.)
3/4"	Orange	PEC-075T-1050	0.932"	1.00"	1130 lb	Up to 1050
1"	Orange	PEC-100T- 500	1.049"	1.35"	1130 lb	Up to 500
1 1/4"	Orange	PEC-125T- 500	1.25"	1.56"	1130 lb	Up to 500
1 1/2"	Orange	PEC-150T- 350	1.57"	1.80"	1130 lb	Up to 350
2"	Orange	PEC-200	2.0"	2.349"	1130 lb	Up to 250

Sample Part Number

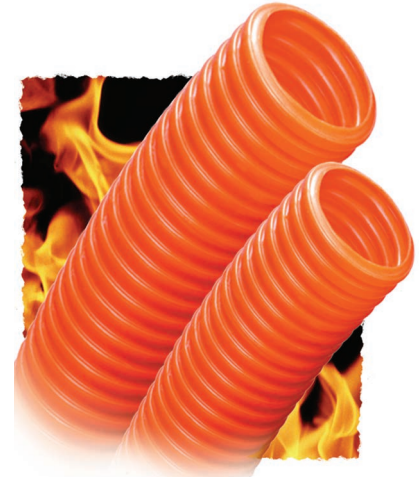
PE	C	100	T	S	2500
Polyethylene (High Density)	Corrugated	1" (I.D.)	Polyester Tape	*Slit Duct (optional)	Put-Up

* Pull tape not available w/ Slit Duct

Note: Corrugated products are not recommended for direct bury due to lack of crush resistance. For direct bury the industry's recommendation is smoothwall products.

Premier-Riser Duct

Premier Riser Duct is a flexible, non-metallic, corrugated raceway used for effective interior cable and fiber optic management. Premier Riser meets UL-(1666) standards safety test for flame propagation height of electrical and optical fiber cables installed vertically in shafts. Premier also meets UL-2024 standards for safety optical fiber cable raceway. Premier Riser is offered in 3/4", 1", 1 1/4", 1 1/2" and 2", with pre-installed pull tape for easy cable installation. The standard color is orange and is offered in a variety of other colors. Sequential marked footage is standard. Custom color options are available.



Riser Reels

Size	Color	Part No.	Nominal I.D.	Nominal O.D.	Pull Tape	Reel Size	Reel Length (ft.)
3/4"	Orange	R-075T- 2200	0.932"	1.00"	1130 lb	36-38-36	2200
3/4"	Orange	R-075T- 6300	0.932"	1.00"	1130 lb	48-45-48	6300
3/4"	Orange	R-075T- 9600	0.932"	1.00"	1130 lb	66-45-66	9600
3/4"	Orange	R-075T-11500	0.932"	1.00"	1130 lb	72-45-72	11500
3/4"	Orange	R-075T-15500	0.932"	1.00"	1130 lb	82-45-82	15500
1"	Orange	R-100T- 500	1.049"	1.35"	1130 lb	36-36-21	500
1"	Orange	R-100T-1200	1.049"	1.35"	1130 lb	36-36-21	1200
1"	Orange	R-100T-2800	1.049"	1.35"	1130 lb	48-30-24	2800
1"	Orange	R-100T-5000	1.049"	1.35"	1130 lb	66-41-24	5000
1"	Orange	R-100T-6000	1.049"	1.35"	1130 lb	72-41-24	6000
1"	Orange	R-100T-9000	1.049"	1.35"	1130 lb	82-41-24	9000
1 1/4"	Orange	R-125T- 700	1.25"	1.56"	1130 lb	36-36-21	700
1 1/4"	Orange	R-125T-1500	1.25"	1.56"	1130 lb	48-41-24	1800
1 1/4"	Orange	R-125T-3400	1.25"	1.56"	1130 lb	66-41-24	3400
1 1/4"	Orange	R-125T-4000	1.25"	1.56"	1130 lb	72-41-24	4000
1 1/4"	Orange	R-125T-6200	1.25"	1.56"	1130 lb	82-41-24	6200
1 1/2"	Orange	R-150T- 550	1.57"	1.80"	1130 lb	36-36-21	550
1 1/2"	Orange	R-150T-1000	1.57"	1.80"	1130 lb	48-30-24	1200
1 1/2"	Orange	R-150T-2500	1.57"	1.80"	1130 lb	66-41-24	2500
1 1/2"	Orange	R-150T-3500	1.57"	1.80"	1130 lb	72-41-24	3500
1 1/2"	Orange	R-150T-4500	1.57"	1.80"	1130 lb	82-41-24	4500
2"	Orange	R-200T- 300	2.0"	2.349"	1130 lb	36-41-24	300
2"	Orange	R-200T- 700	2.0"	2.349"	1130 lb	48-41-24	700
2"	Orange	R-200T-1600	2.0"	2.349"	1130 lb	66-41-24	1600
2"	Orange	R-200T-2000	2.0"	2.349"	1130 lb	72-41-24	2000
2"	Orange	R-200T-2800	2.0"	2.349"	1130 lb	82-41-24	2800

Riser Coils

Size	Color	Part No.	Nominal I.D.	Nominal O.D.	Pull Tape	Coil Length (ft.)
3/4"	Orange	R-075T-1050	0.932"	1.00"	1130 lb	Up to 1050
1"	Orange	R-100T- 500	1.049"	1.35"	1130 lb	Up to 500
1 1/4"	Orange	R-125T- 500	1.25"	1.56"	1130 lb	Up to 500
1 1/2"	Orange	R-150T- 350	1.57"	1.80"	1130 lb	Up to 350
2"	Orange	R-200T- 250	2.0"	2.349"	1130 lb	Up to 250

Sample Part Number

R	100	T	S	2500
Riser	1" (I.D.)	Polyester Tape	Slit Duct	Put-Up

PREMIER CONDUIT

Premier Conduit is a minority owned manufacturer of corrugated conduit for Telecommunications and other markets. Established in 2001, Premier Conduit currently manufactures Corrugated HDPE, Plenum and Riser Duct. Large enough to supply your needs but small enough to maintain the best price and value in the industry.

Consider Premier Conduit your source for savings and partner in success.



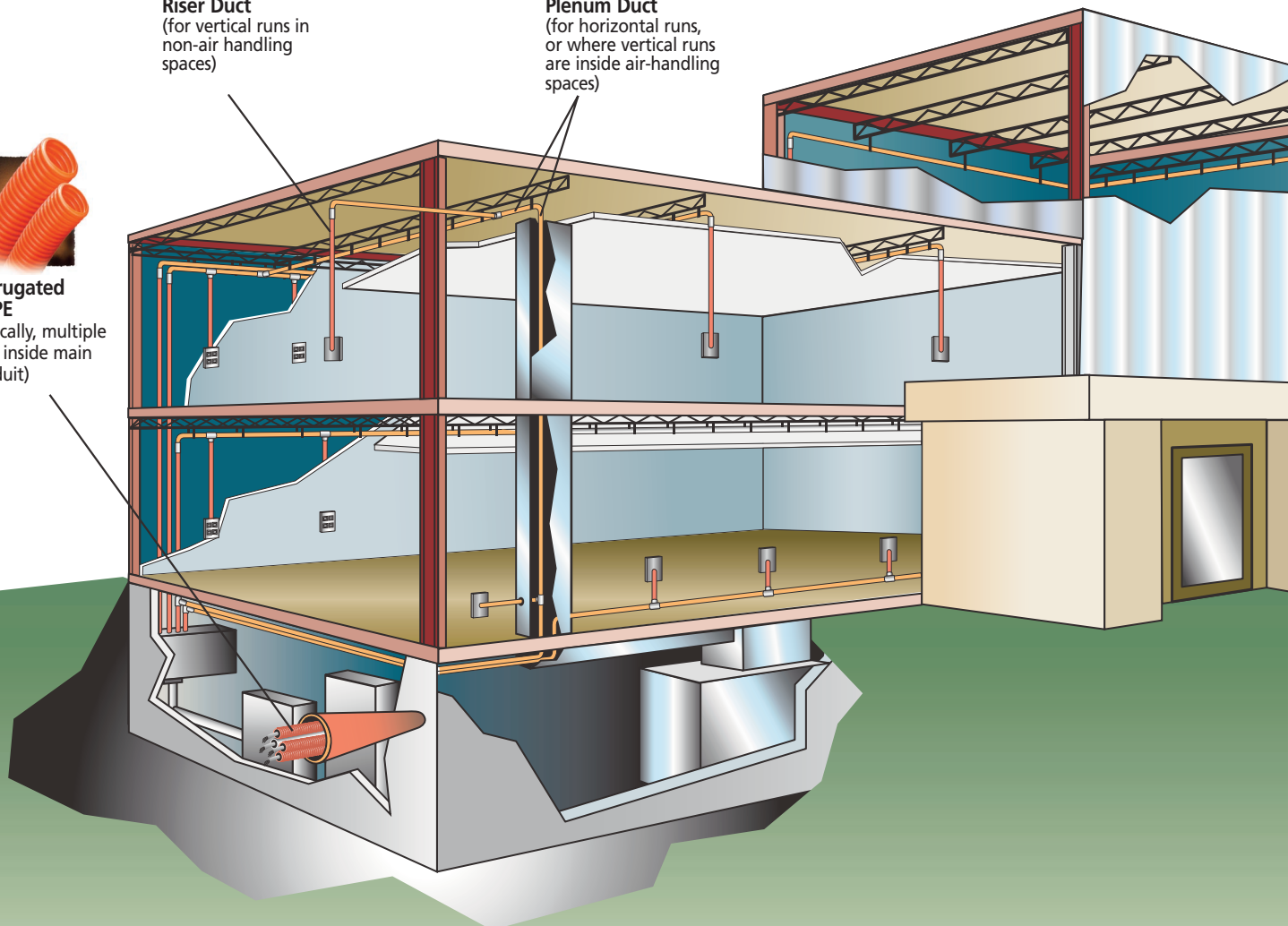
Riser Duct
(for vertical runs in non-air handling spaces)



Plenum Duct
(for horizontal runs, or where vertical runs are inside air-handling spaces)



Corrugated HDPE
(typically, multiple runs inside main conduit)



Premier Conduit Pull Boxes

For your convenience, Premier Conduit offers Pull Boxes for Coils.

Box Size 27" x 27" x 15"

Maximum footage up to 250 ft. of 3/4"

Box Size 31" x 31" x 9"

Maximum footage up to 200 ft. of 3/4"/150 ft. of 1"

Box Size 32" x 32" x 15"

Maximum footage up to 530 ft. of 3/4"/400 ft. of 1"/250 ft. of 1-1/4"

Box Size 40" x 40" x 15"

Maximum footage up to 1050 ft. of 3/4"/600 ft. of 1"/
500 ft. of 1-1/4"/350 ft. of 1-1/2"/250 ft. of 2"



Premier Conduit's Couplers & Terminal Adapters

ETL - Meets UL 2024 - CSA

Duct Description	Coupler Part No.	Terminal Adapter Part No.
3/4" HDPE/Riser/Plenum	PCCP-075	PCCPTA-075
1" HDPE/Riser/Plenum	PCCP-100	PCCPTA-100
1-1/4" HDPE/Riser/Plenum	PCCP-125	PCCPTA-125
1-1/2" HDPE/Riser/Plenum	PCCP-150	PCCPTA-150
2" HDPE/Riser/Plenum	PCCP-200	PCCPTA-200



Anodized Aluminum ETL
Couplers
Tapered Screw on
Sizes 3/4" – 2"



Anodized Aluminum ETL
Terminal Adapters
w/Lock Ring
Sizes 3/4" – 2"



Expansion Type Duct Plugs
(Can be used with pull tape)

**Smoothwall quotes can be obtained via
E-mail at: sales@northcoastconduit.com
or by Phoning (814) 838-2560**

Sizes from 1/2 inch to 4 inch
HDPE in SDR (ASTMF-2160) and SIDR (ASTMD-2239)
Also available on request ETL Listed HDPE Conduit
Meeting UL 651A (Smoothwall) & UL1990 (CIC)



3200 West 22nd Street
Erie, PA 16506
ph 814.835.2900
fax 814.835.2904
www.premierconduit.com

Proudly Made
in the U.S.A.



McP-1500-2015

