



Temperature Screening Thermal Camera Installation & Configuration Guide



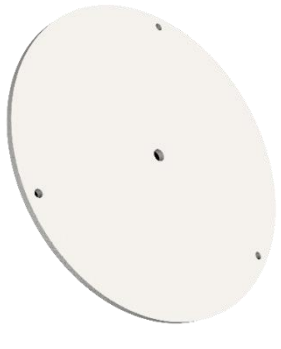
Bullet:DS-2TD2617B



Turret:DS-2TD1217B

Temperature measurement range: 30-45°C
 Working temperature: 10-35°C
 Accuracy: ±0.5°C
 Resolution:160 × 120

1 Installation-Tripod quick temporary deployment



Tripod Adapter For Turret



Tripod Adapter for Bullet



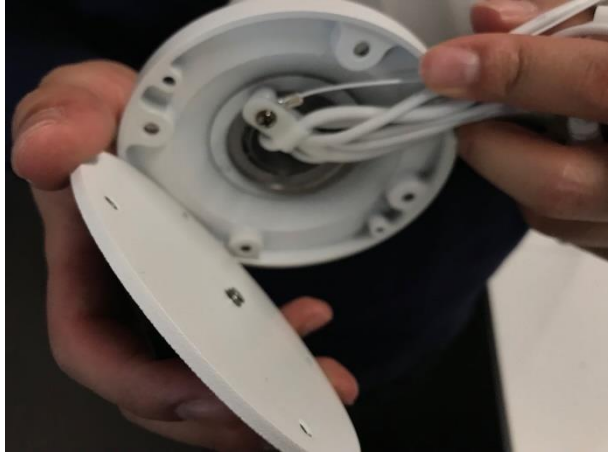
A. Tripod connector fixed on the adapter



B. Fix the adapter on the camera



C. Install the camera on the tripod

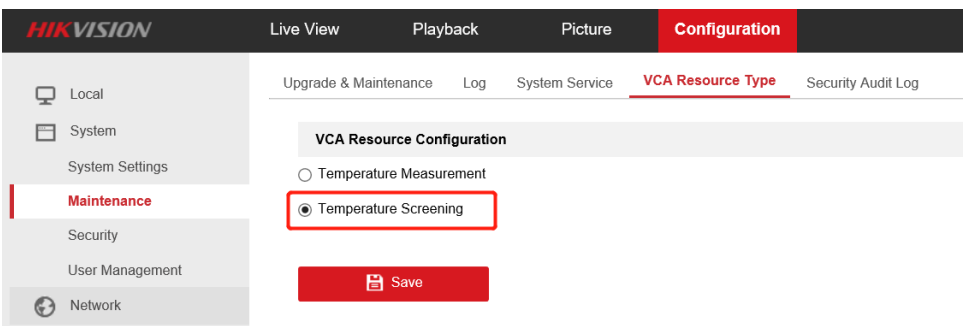


D. Installation complete

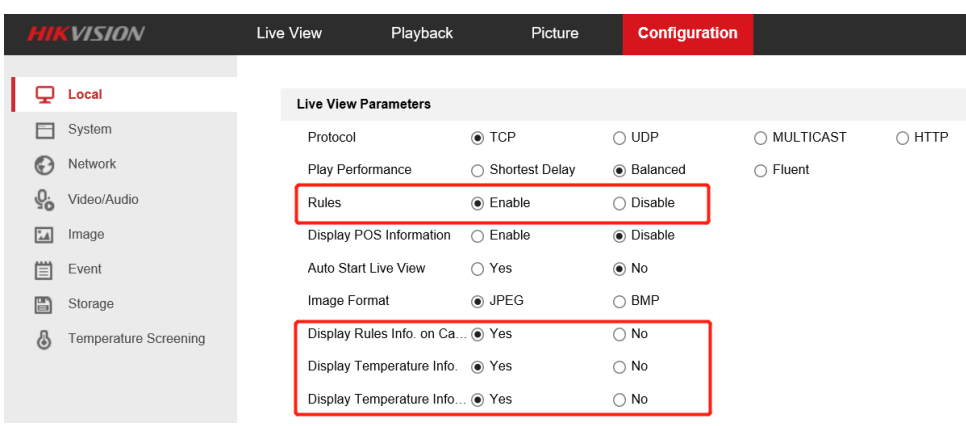
Installation Parameter Recommended		
Model	Distance (between human&camera)	
DS-2TD1217B-3/PA	0.8-1.5m	
DS-2TD2617B-3/PA		
DS-2TD1217B-6/PA	1.5-3m	
DS-2TD2617B-6/PA		
Model	Height	Elevation angle
DS-2TD1217B-3/PA	1.5m	≤20°
DS-2TD2617B-3/PA		
DS-2TD1217B-6/PA		
DS-2TD2617B-6/PA		

2 Configuration

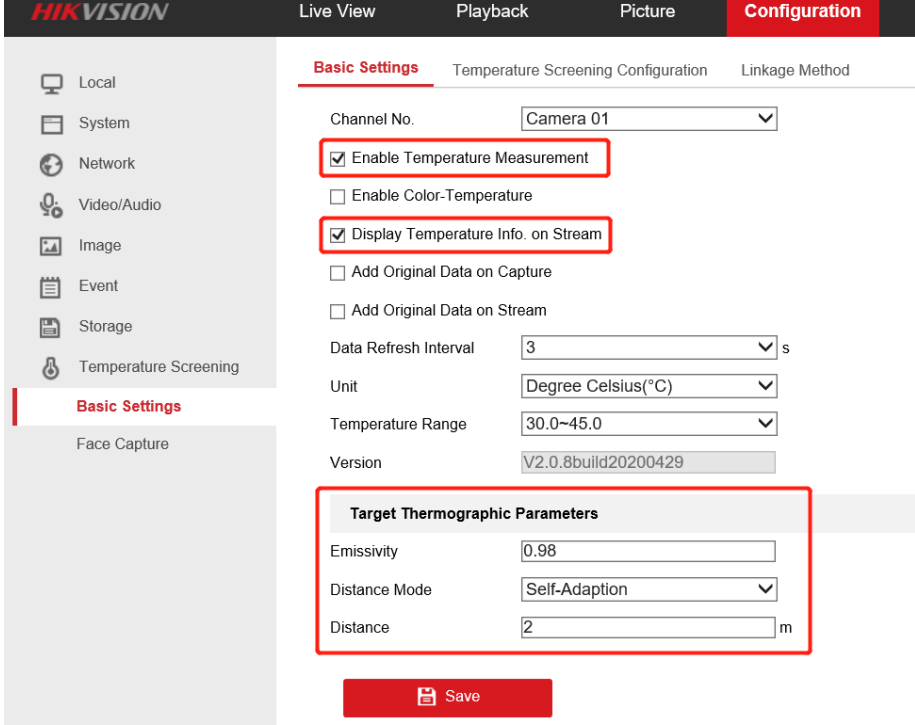
1. Select Temperature Screening as VCA Resource Type.



2. Go to Local Configuration interface, enable and save the following settings:



3. Go to Temperature Screening Basic Settings. Configure and save the following settings:

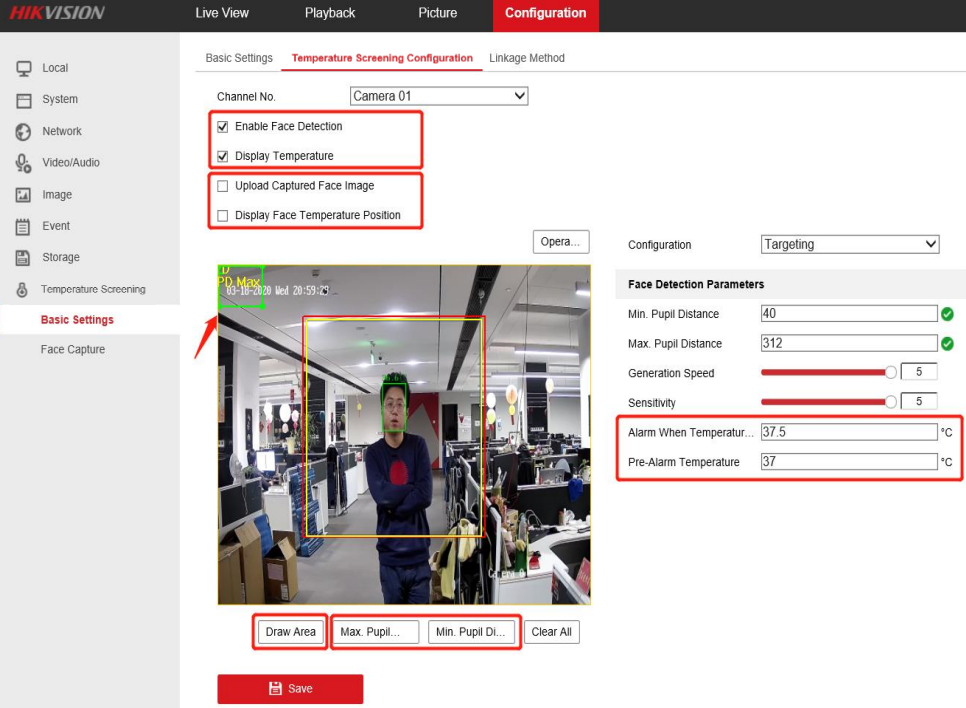


Emissivity: For human skin, this value is normally set as 0.98.

Distance Mode: Select **Self-Adaption** or **Fixed Distance** as distance mode during measurement.

Distance: The actual distance between the camera and human.

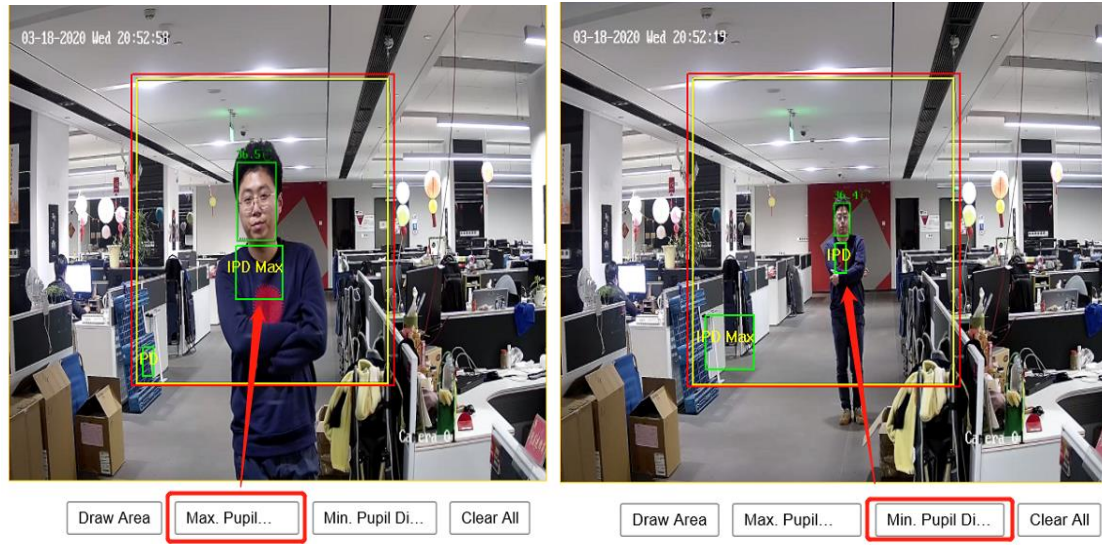
4. Configure Camera 01 (Optical) Settings.



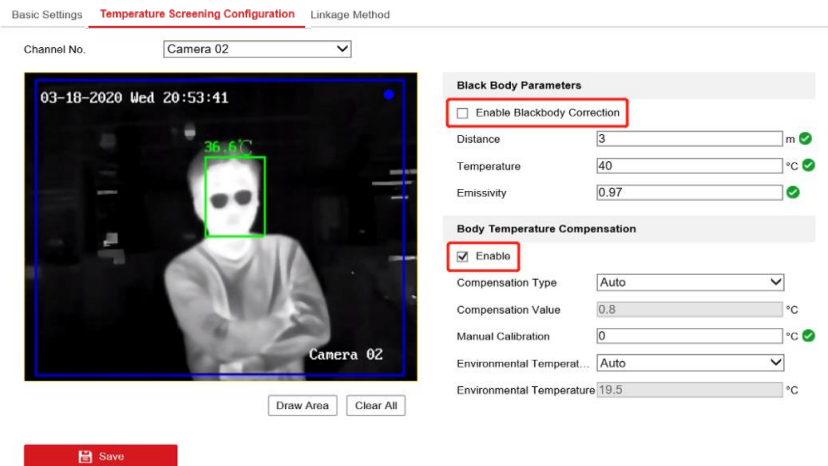
Check **Enable Face Detection** and **Display Temperature**. Check **Upload Captured Face Image** and **Display Face Temperature Position** if needed.

Set Alarm Temp. and Pre-alarm Temp.

Press **Draw Area** to adjust face detection region. Click **Max. Pupil Distance** and **Min. Pupil Distance** to draw width filter frame, Max and Min distance refer to camera detection distance.

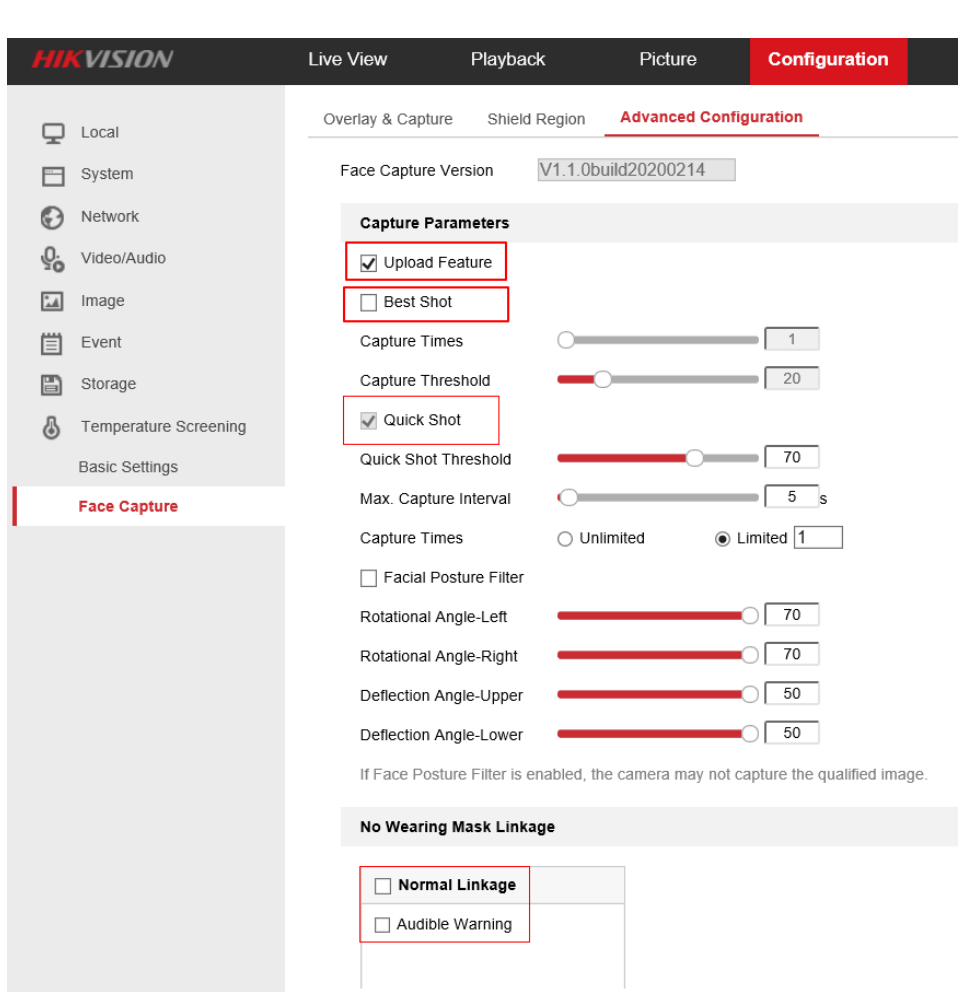


5. Configure Camera 02 (Thermal) Settings.



Uncheck **Enable Blackbody Correction** if no blackbody is used. Check **Enable of Body Temperature Compensation** and keep parameters as default.

6. Configure Face Capture.



Check **Upload Feature** to upload mask detection info. to IVMS-4200 event details and AI Dashboard interface.

Best Shot: If a face image score never reaches threshold and no abnormal temperature is detected, no face capture will be uploaded.

Quick Shot: At least one face capture will be uploaded even if it is a low-quality face image.

It is recommended to use **Quick Shot** mode for better response performance, and use **Best Shot** if high quality image is required for comparing.

The **No Wearing Mask Linkage** is disabled by default. Check **Audible Warning** (Devices with /PA) as needed.

3 Advice

The environment would easily influence the performance of thermal camera. Therefore, it is required to be used in a stable indoor environment without wind, and the ambient temperature should be consistent.

Here's some advice:

1. Set up a one-way screening zone, and ensure that camera can clearly see the face of person whose skin-surface temperature is being measured.
2. Avoid backgrounds that are too crowded or bright.
3. 90 minutes after turn on the camera, then go skin-surface temperature measurement, because the camera itself needs to be steady first.
4. If there is a large gap between indoor and outdoor temperature, it is highly suggested to wait more than 5 minutes then measure skin-surface temperature of whom just got in.
5. Follow the guidance of required temperature measurement distance.