

## GigaMax® Cat 5e UTP QuickPort® Connector

### APPLICATION

The GigaMax Cat 5e UTP QuickPort Connector is designed to be used with any Category 5e UTP structured cabling system. The modular connector features a one-piece narrow design that supports high port density in a small area, and is ideal for use in residential, MDU, and high megabit applications.



### SPECIFICATION

The modular connector shall meet or exceed requirements for Category 5e described in the ANSI/TIA-568-C.2 specifications. The connectors shall also be in compliance with all National Electrical Codes; compliant with ANSI/TIA-1096-A; UL listed; and independently UL Certified. In addition to Category 5e compliance, the connector shall have the ability to support high megabit and shared-sheath applications. All plastics used in construction of the connector bodies shall be fire-retardant with a UL flammability rating of 94V-0. Termination of all connectors shall be 110-type IDC with solder-plated phosphor bronze contacts. The connector shall provide a ledge directly adjacent to the 110-style termination against which the wires can be directly terminated and cut in one action by the installer. Connector wiring label shall provide installation color codes for both T568A and T568B wiring schemes. The modular hardware shall fit all other installed telecommunications wallplates, outlets and field-configurable patch panels and patch blocks.

### FEATURES

- Available in 13 colors
- Dual wiring code label allows connector to be wired to either T568A or T568B
- Individual port configurability allows specification flexibility
- Robust one-piece lead-frame design
- Narrow connector allows high port density in a small area
- Performance supports high megabit and shared-sheath applications
- Available individually, in bulk packages of 25, and in bulk packages of 150 with a JackRapid™ Punchdown Tool

### DESIGN CONSIDERATIONS

- Use in any QuickPort® housing to support GigaMax Cat 5e UTP connectivity in surface-mount, flush-mount, or modular furniture outlets, or patch panels and patch blocks
- Can be used in conjunction with other QuickPort snap-in modules for voice/data and video applications over UTP, coax and fiber
- To ID ports, use different colored modules for each application

### STANDARDS COMPLIANCE

- ANSI/TIA-568-C.2
- cULus listed
- ANSI/TIA-1096-A (Formerly FCC Part 68)

### PHYSICAL SPECIFICATIONS

Dimensions: See page two  
Materials: Connector body is high-impact, fire-retardant plastic rated UL 94V-0.

### COUNTRY OF ORIGIN

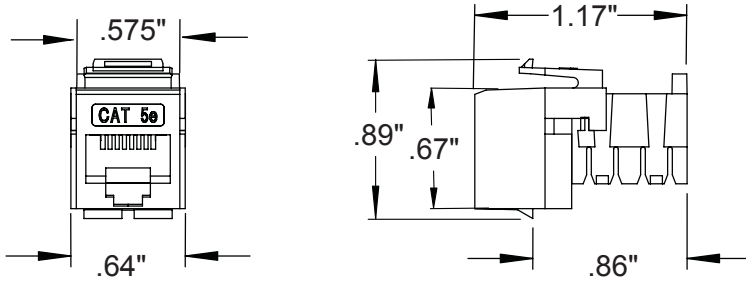
USA

### WARRANTY INFORMATION

For a copy of Leviton product warranties, visit [www.leviton.com/warranty](http://www.leviton.com/warranty).

**ELECTRONIC FILES**

For CAD files, typical specs, or technical drawings (.DXF, .DWG), visit [www.leviton.com](http://www.leviton.com).



**5G108-xx5**

**PART NUMBERS**

Description	Connector	QuickPack® 25/Bag	150/Bag with JackRapid™ Tool
GigaMax® Cat 5e UTP QuickPort® Connector, white	5G108-RW5	5G108-BW5	5G108-JW5
GigaMax Cat 5e UTP QuickPort Connector, ivory	5G108-RI5	5G108-BI5	5G108-JI5
GigaMax Cat 5e UTP QuickPort Connector, orange	5G108-RO5	5G108-BO5	5G108-JO5
GigaMax Cat 5e UTP QuickPort Connector, blue	5G108-RL5	5G108-BL5	5G108-JL5
GigaMax Cat 5e UTP QuickPort Connector, black	5G108-RE5	5G108-BE5	5G108-JE5
GigaMax Cat 5e UTP QuickPort Connector, light almond	5G108-RT5	5G108-BT5	—
GigaMax Cat 5e UTP QuickPort Connector, grey	5G108-RG5	5G108-BG5	—
GigaMax Cat 5e UTP QuickPort Connector, crimson red	5G108-RC5	5G108-BC5	—
GigaMax Cat 5e UTP QuickPort Connector, yellow	5G108-RY5	5G108-BY5	—
GigaMax Cat 5e UTP QuickPort Connector, green	5G108-RV5	5G108-BV5	—
GigaMax Cat 5e UTP QuickPort Connector, purple	5G108-RP5	5G108-BP5	—
GigaMax Cat 5e UTP QuickPort Connector, brown	5G108-RB5	5G108-BB5	—
GigaMax Cat 5e UTP QuickPort Connector, dark red	5G108-RR5	5G108-BR5	—



**Leviton Network Solutions**  
2222 - 222nd St. SE  
Bothell, WA 98021-4416

**Asia / Pacific**  
T +1.631.812.6228  
E [infoasean@leviton.com](mailto:infoasean@leviton.com)

**Canada**  
T +1.514.954.1840  
E [pcservice@leviton.com](mailto:pcservice@leviton.com)

**Caribbean**  
T +1.954.593.1896  
E [infocaribbean@leviton.com](mailto:infocaribbean@leviton.com)

**China**  
T +852.2774.9876  
E [infochina@leviton.com](mailto:infochina@leviton.com)

**Colombia**  
T +57.1.743.6045  
E [infocolombia@leviton.com](mailto:infocolombia@leviton.com)

tel 1-800-824-3005  
tel +1-425-486-2222  
[appeng@leviton.com](mailto:appeng@leviton.com)  
[www.leviton.com](http://www.leviton.com)

**Europe**  
T +33.6.8869.1380  
E [infoeurope@leviton.com](mailto:infoeurope@leviton.com)

**India / SAARC**  
T +971.4.886.4722  
E [infoindia@leviton.com](mailto:infoindia@leviton.com)

**Mexico**  
T +52.55.5082.1040  
E [lsamarketing@leviton.com](mailto:lsamarketing@leviton.com)

**Middle East & Africa**  
T +971.4.886.4722  
E [imeinfo@leviton.com](mailto:imeinfo@leviton.com)

**South Korea**  
T +82.2.3273.9963  
E [infokorea@leviton.com](mailto:infokorea@leviton.com)