

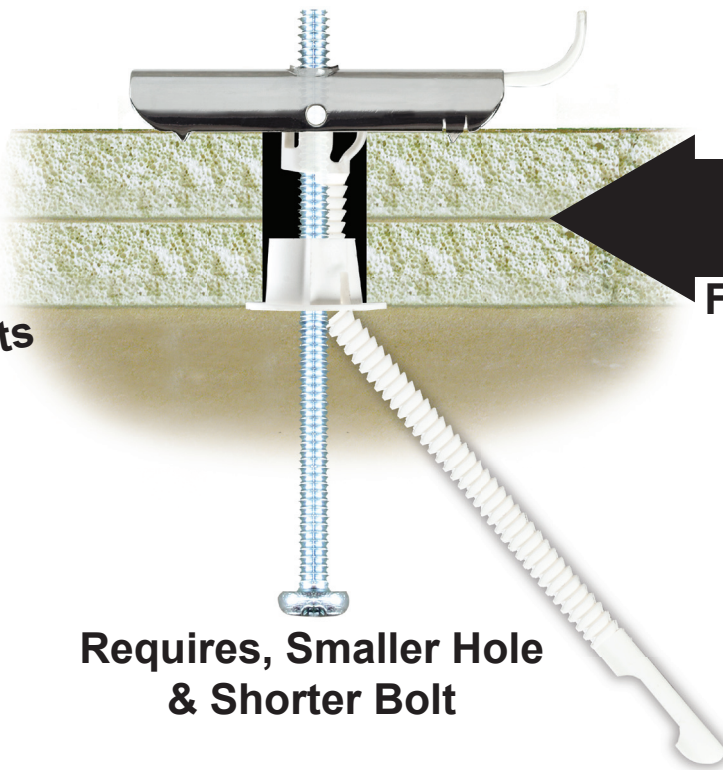


FlipToggle[®]



THE NEW WAY OF ANCHORING

2X
Stronger Than
Regular Toggle Bolts



Ideal
For Thick Base
Materials

Requires, Smaller Hole
& Shorter Bolt

Great for:



Televisions



Cabinets



A/C Units

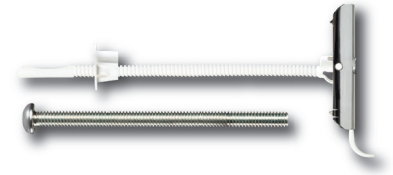


FLIPTOGGLE KIT

FLIPTOGGLE KIT

PC 4740

The Fliptoggle® anchor's strong toggling mechanism provides heavy duty holding power in drywall, plaster or hollow concrete blocks. Its main feature is its ability to be installed in thick hollow wall material. Its simple and effective tilting mechanism ensures a trouble-free installation every time and is twice as strong as the regular toggle bolts of the same bolt diameter, providing labor savings on every job site. It is available in both 3/16" and 1/4" diameter and only requires a 1/2" hole, and can be used with any screw length (up to 3-3/4" - sold separately). The innovative design even provides end users the ability to remove the mounted fixture for repair and/or maintenance and reinstall without the necessity of a new hole location.

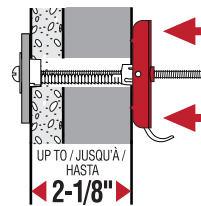


CAT. NO.	UPC	DESCRIPTION	STD MSTR WT/STD		
FTG316	85452	10 3/16"-24 x 2-1/2" Screws 10 3/16" FlipToggle®	1	10	0.68#
FTG14	85451	10 1/4"-20 x 2-1/2" Screws 10 1/4" FlipToggle®	1	10	0.68#

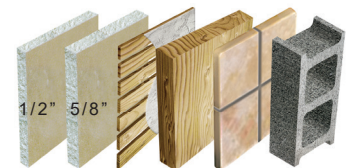
FEATURES:

- Ideal for all types of hollow wall, up to 2-1/8" thick
- Requires a 1/2" hole
- Fast and easy installation
- New one strap design for easier insertion and flipping operation
- Can be used with any bolt length (up to 3-3/4" - sold separately)
- Superior holding power
- Multi Drive - Slot/Phil/SQ/Screws
- Can be used for ceilings

MATERIAL	SIZE	DRILL	ULTIMATE	SAFE
Drywall 1/2"	3/16"-24	1/2"	178lbs	89lbs
	1/4"-20	1/2"	181lbs	90lbs
Drywall 5/8"	3/16"-24	1/2"	294lbs	147lbs
	1/4"-20	1/2"	299lbs	149lbs
Hollow Block	3/16"-24	1/2"	807lbs	403lbs
	1/4"-20	1/2"	1030lbs	515lbs

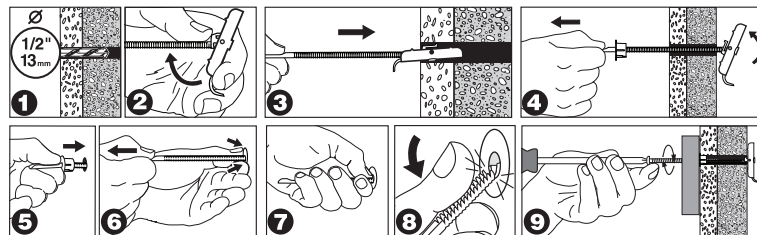


MATERIAL:



TOOLS & SPECIALTY ITEMS

TECH TALK



1. Drill the appropriate size hole.
2. Flip the head of the Fliptoggle® in order for it to be in line and secured onto the strap.
3. Insert the Fliptoggle® into the drilled hole.
4. When completely inserted, pull the strap towards you which will flip the toggle flat against the back of the wall.
5. Push the cap into the drilled hole until flush with the wall.
- 6/7. Hold the cap against the wall while pulling the strap towards you until reasonably tight.
8. Bend to snap off the excess of the strap flush with the wall.
9. Insert the bolt through the fixture, into the anchor and tighten securely.

